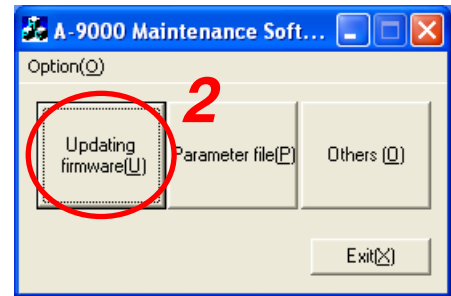


16.5. Updating the Firmware

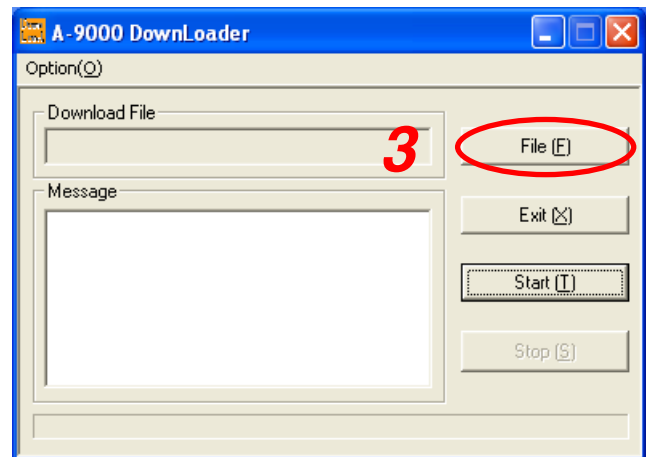
Step 1. Double-click the "MaintCtrl.exe" icon to run the 9000 series maintenance software.
The screen at right is displayed.



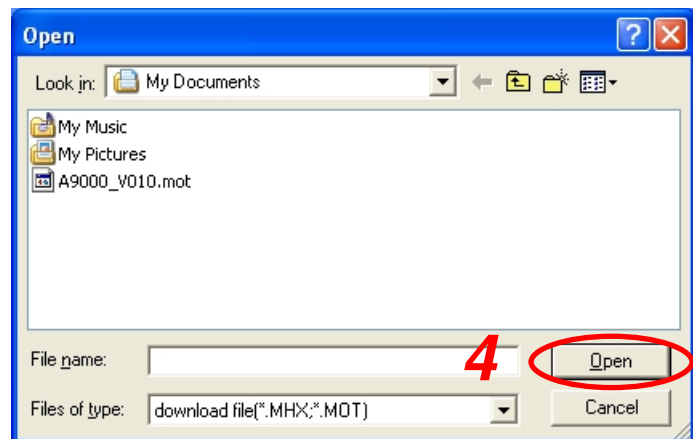
Step 2. Click the "Updating firmware" button.
The window at right opens.
The communication status is displayed in the "Message" box.

Tip

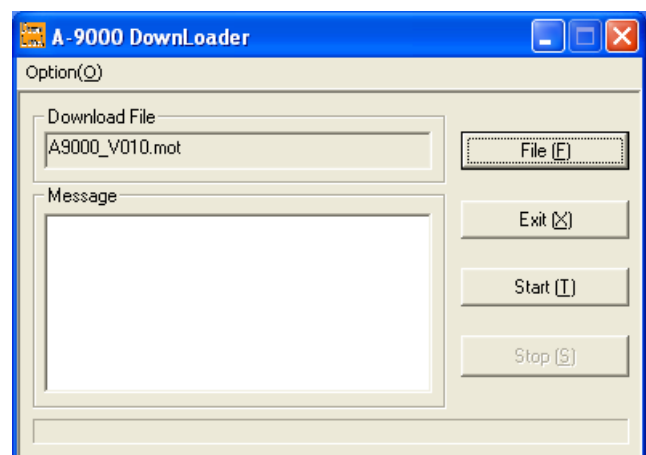
You can also set the communication port here when pressing the "Option" button on the menu bar to select "Communication Setting."



Step 3. Click the "File" button.
The window at right opens.



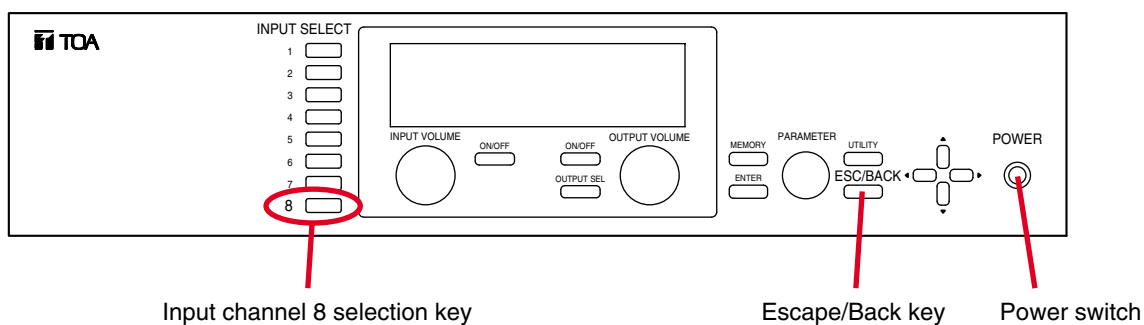
Step 4. Select the file, then click the "Open" button.
The selected download file is entered in the "Download File" box.



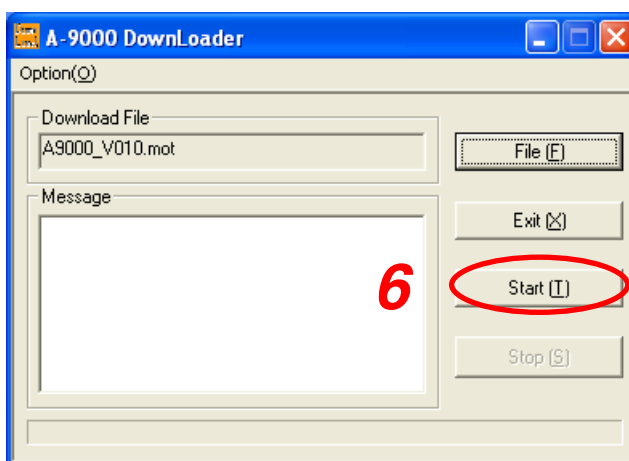
Step 5. Perform the following key operations at the unit to make the unit ready for data reception from the PC.

5-1. Turn the power switch off.

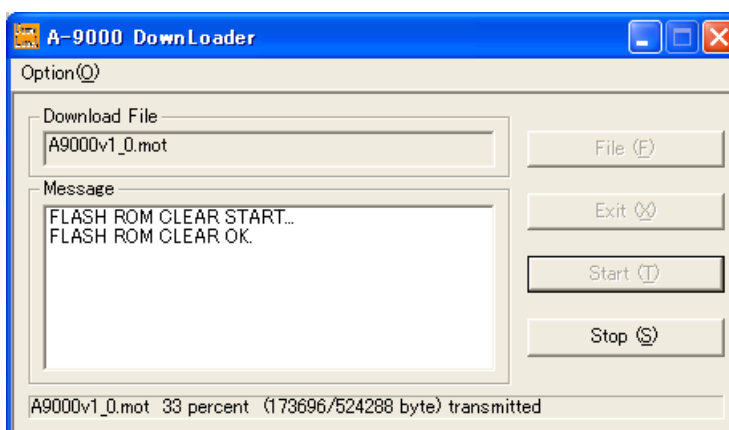
5-2. Press the Input channel 8 selection key, Escape/Back key, and Power switch at the same time.
The unit is placed in standby mode for communications with the PC.



Step 6. Click the "Start" button to start the firmware file transfer.



The window at right opens.



Step 7. Click the "Exit" button to terminate the program after download completion.
The screen returns to the initial menu screen in Step 1.